

Author: Stephen Millard Position: Clinical Trial Manager Email: Stephen.millard@health.nsw.gov.au
Phone: 02 6369 3127 ECLP Cohort 17

AIM: Within 1 year patients with Advanced Melanoma will have the option of accessing local Clinical Trials.

Background

Both Local and state strategic plans have identified that patients in the Central West are disadvantaged by geographical location and by the lack of some services including clinical trial's. Patients still have to travel large distances to receive trial drugs that are available to those who live in metropolitan areas. During the last 12 months 50 patients have been treated by medical oncology for Melanoma in Orange hospital.

THE TEAM

- Sponsor- Catherine Nowlan . General Manager. Orange Health Service
- Project team members:
 - Kerry Lenton- Research Nurse
 - Dr Peter Fox-Medical Oncologist
 - Dr Rob Zielinski- Medical Oncologist
 - Sarah Belringer-Cancer Institute of NSW
 - Kate Ellis-Western NSW Primary Health Network
 - Joel Beggall- Cancer Services Information Manager

Standards and Literature

- http://www.clintrial.org.au/index.php?option=com_content&view=featured&Itemid=101
- http://www.clintrial.org.au/index.php?option=com_content&view=article&id=18&Itemid=106
- <http://www.safetyandquality.gov.au/our-work/accreditation-and-the-nsqhs-standards/>
- http://www.statistics.cancerinstitute.org.au/trends_agegroup/p/trends_agegroup incid C43 X850 extall P.htm
- <http://www.statistics.cancerinstitute.org.au/>

Driver Diagram

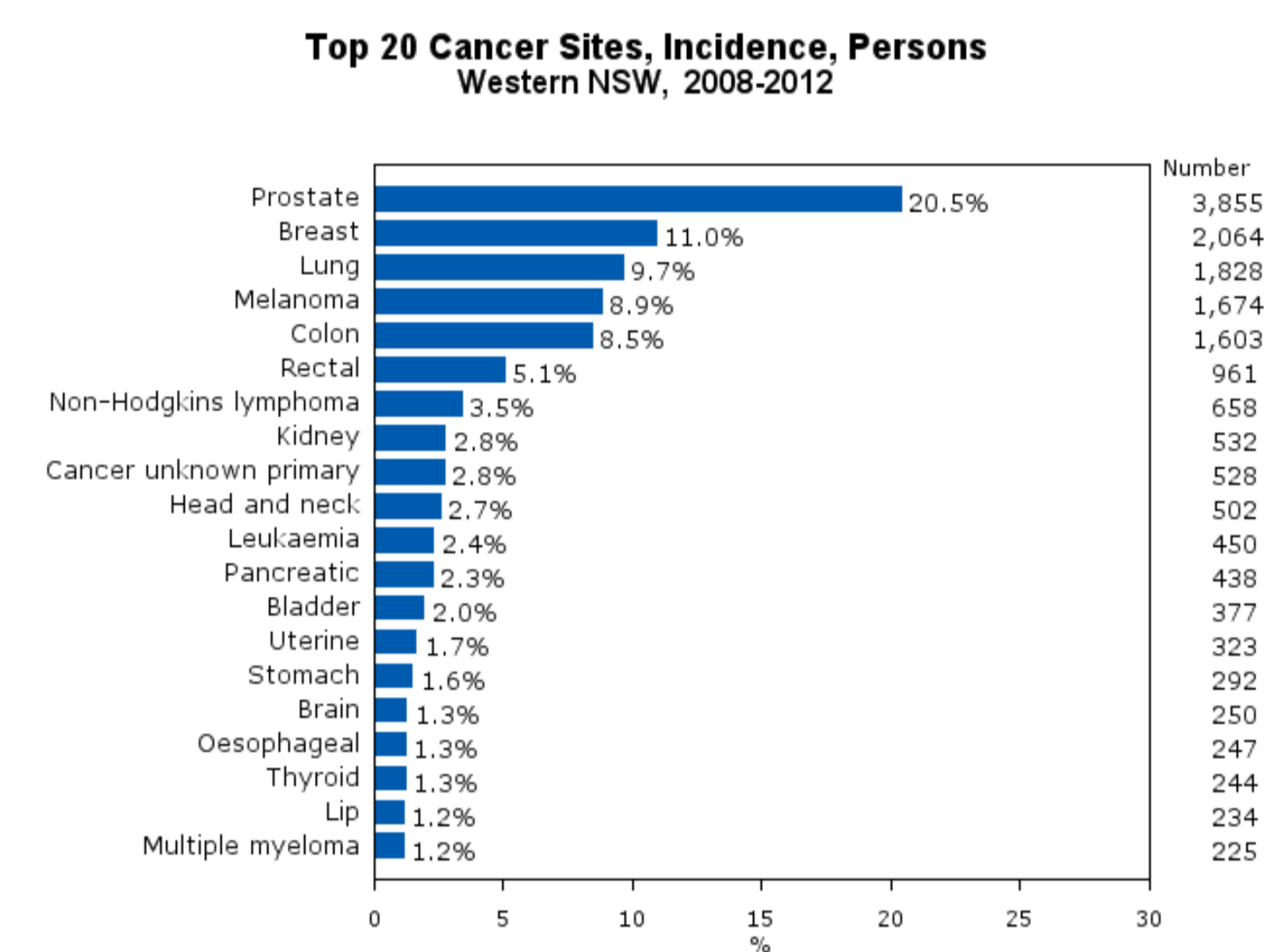
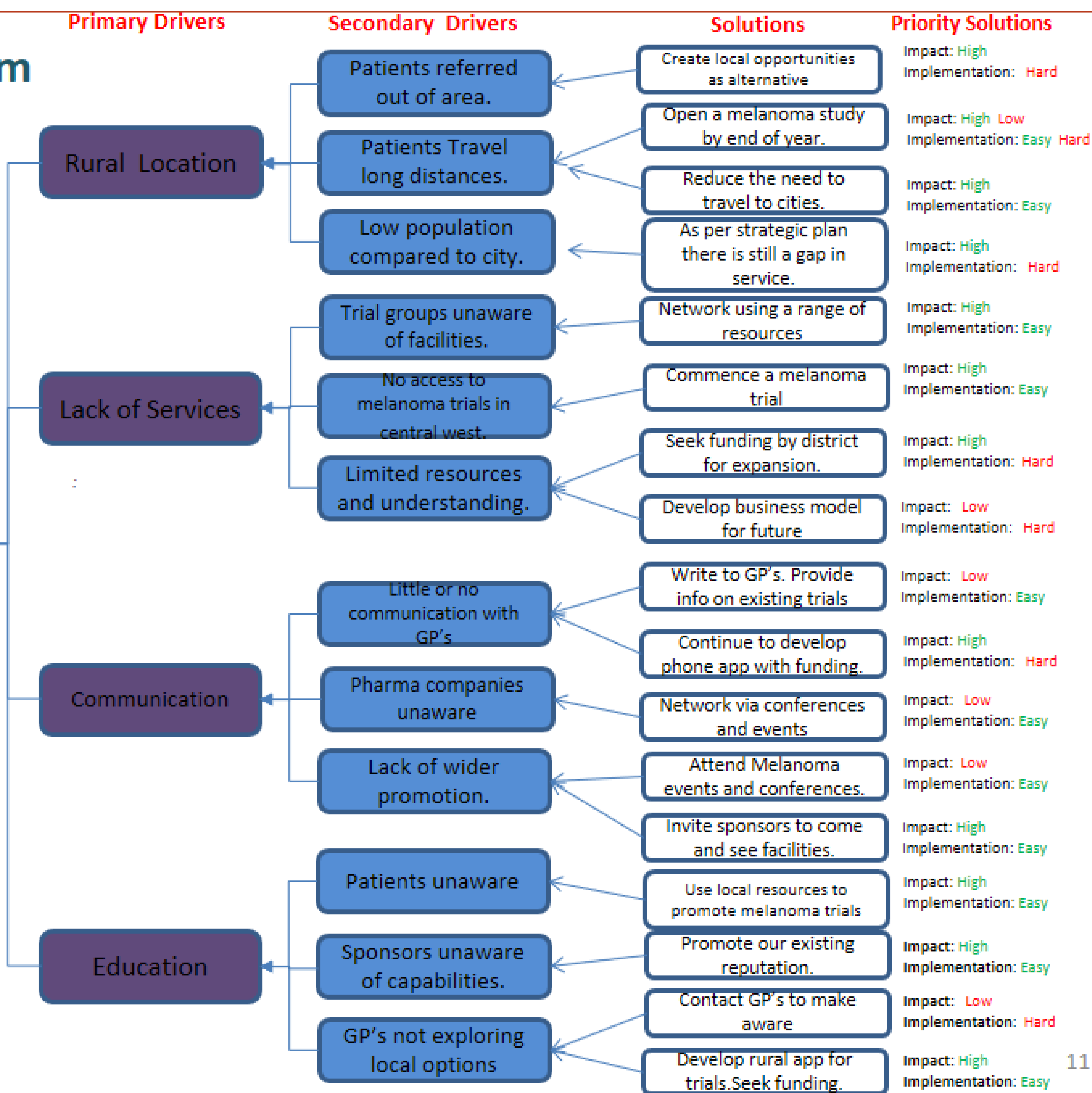
The Problem: Patients are disadvantaged by having no melanoma clinical trials outside of standard of care in the Central West.

Outcome Measure:
• To complete by the end of 2017

Outcome Measure:
• To be in able to offer a melanoma clinical trial by the end of 2017

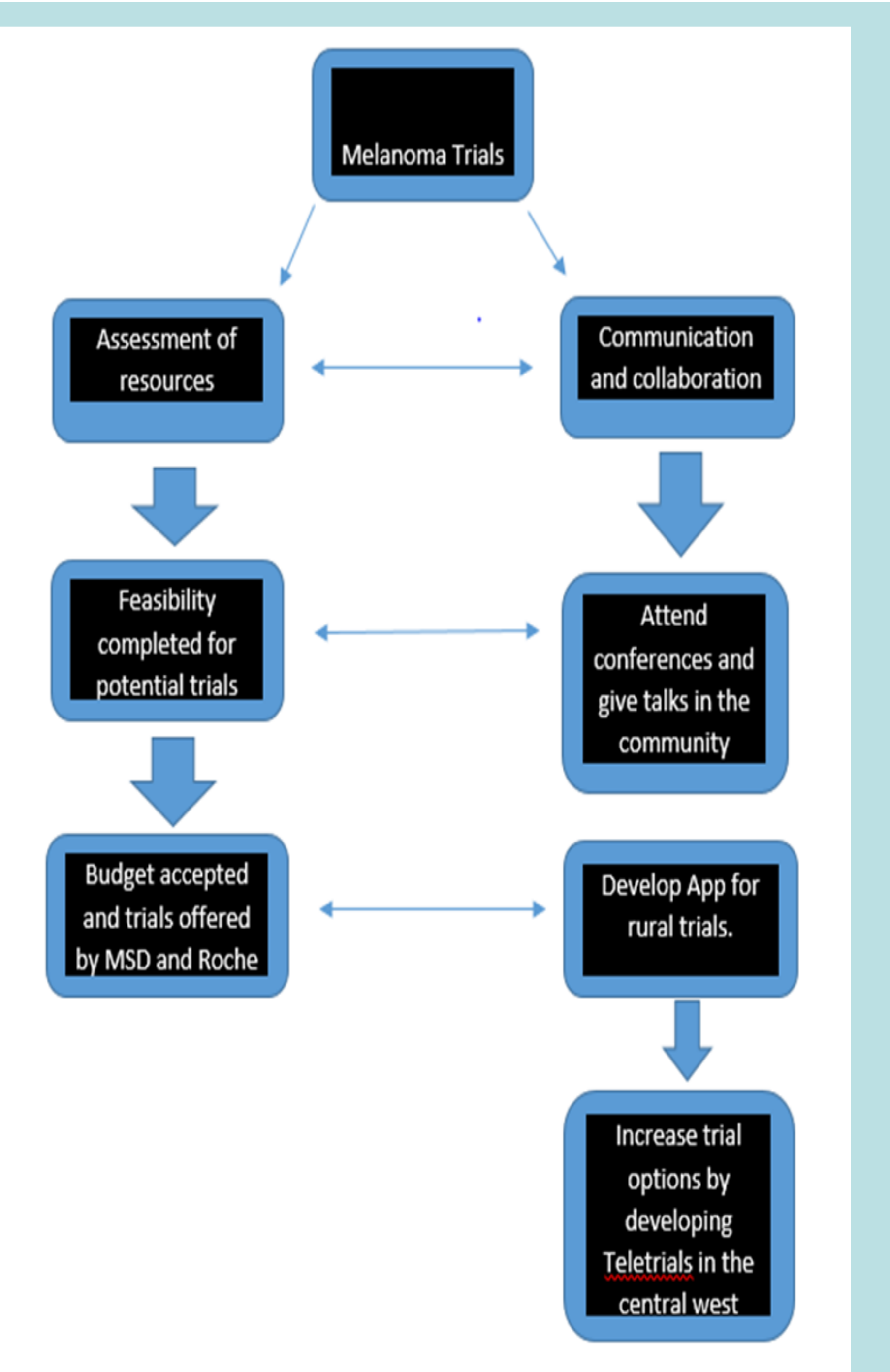
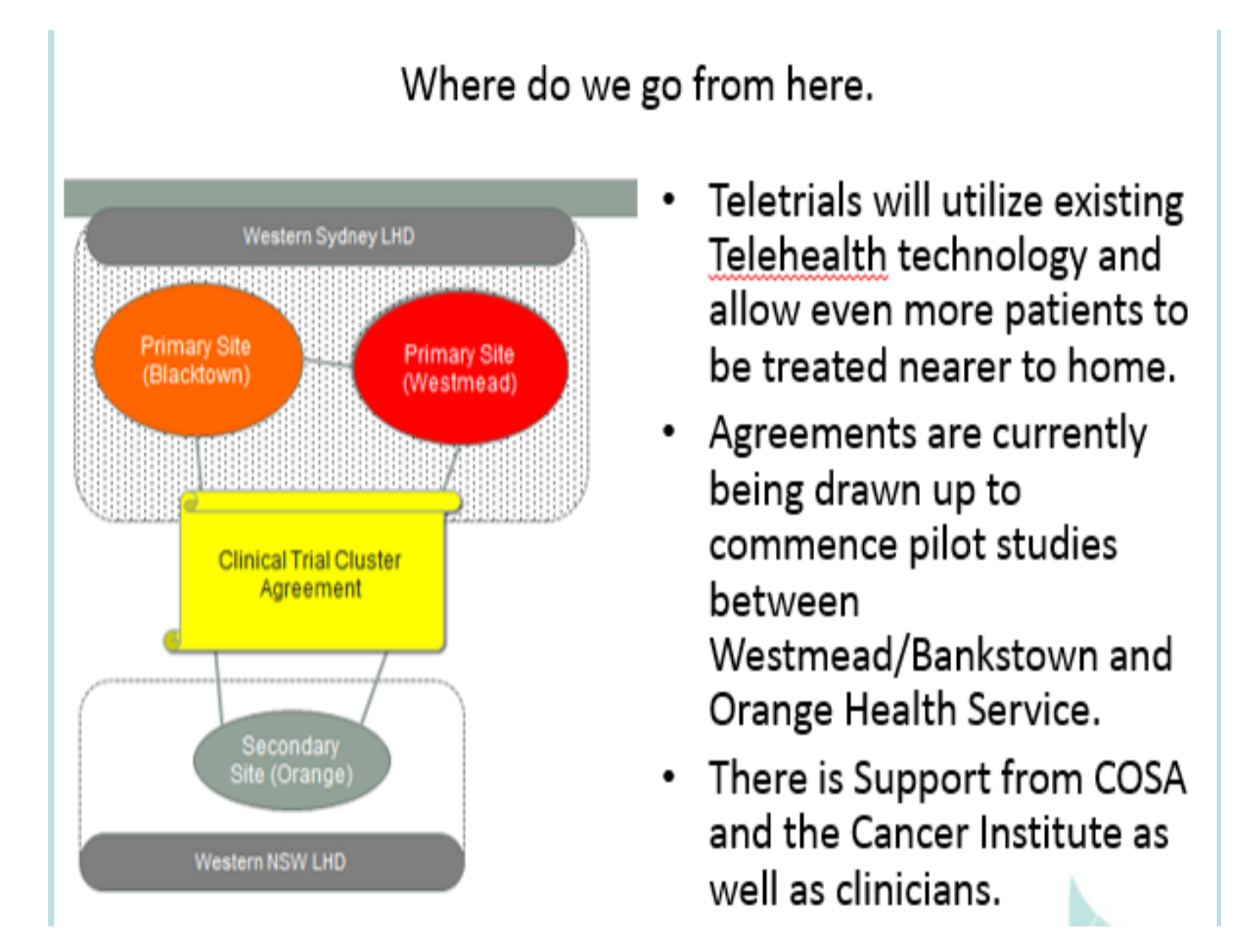
Team Members:

- Project Sponsor/s – Catherine Nowlan
- Team Leader - Steve Millard
- Rob Zielinski-Oncologist
- Pete Fox-Oncologist
- Kerry Lenton-Research Nurse
- Sarah Bellringer. Cancer Institute.
- Joel Beggall-Information Manager



The ClinTrial Refer Rural App

- The ClinTrial Refer App for the rural setting will allow GP's, hospital staff and patients easy to access to information about trials that are being conducted locally. This will also assist in the resolution of the problem of patients being referred out of area.



Outcomes

Current strategic plans have already clearly identified that the availability of some health care services are lacking in rural areas. *The project has highlighted that communication and collaboration processes across multiple teams and sponsors can bring services together to provide options to patients closer to home. The rural trial App will bring information to local GP's allowing them to at least consider local options before referring patients out of the district. Thanks to Roche and MSD BRAF + and BRAF wildtype trials have been offered and accepted .Patients will soon have options closer to home. Both Melanoma trials will be available to patients before the end of 2017 and although we still have a long way go the foundations for more Melanoma studies are strong. Resources remain the strongest challenge for trials in the central west as it is the single most self limiting factor for progress in the future.*

Collaboration

- Collaboration and more collaboration.
- Networking and more networking.
- Following local and state strategic plans to clearly identify and achieve goals.

Networking

- Raising awareness among the local communities and getting them on board was a vital part of the process.
- Many who attended workshops were unaware that clinical trials existed in the central west.
- Many patient stories were captured at these events highlighting a desperate need to increase options.

Plans to spread

It is hoped that the success in attracting Melanoma trials will continue as more treatment options become available and more GP's, sponsors and facilities come on board to make the patient journey a little more bearable.